



**Design No. V444**  
**BXUV.V444**  
**Fire-resistance Ratings - ANSI/UL 263**

[Page Bottom](#)

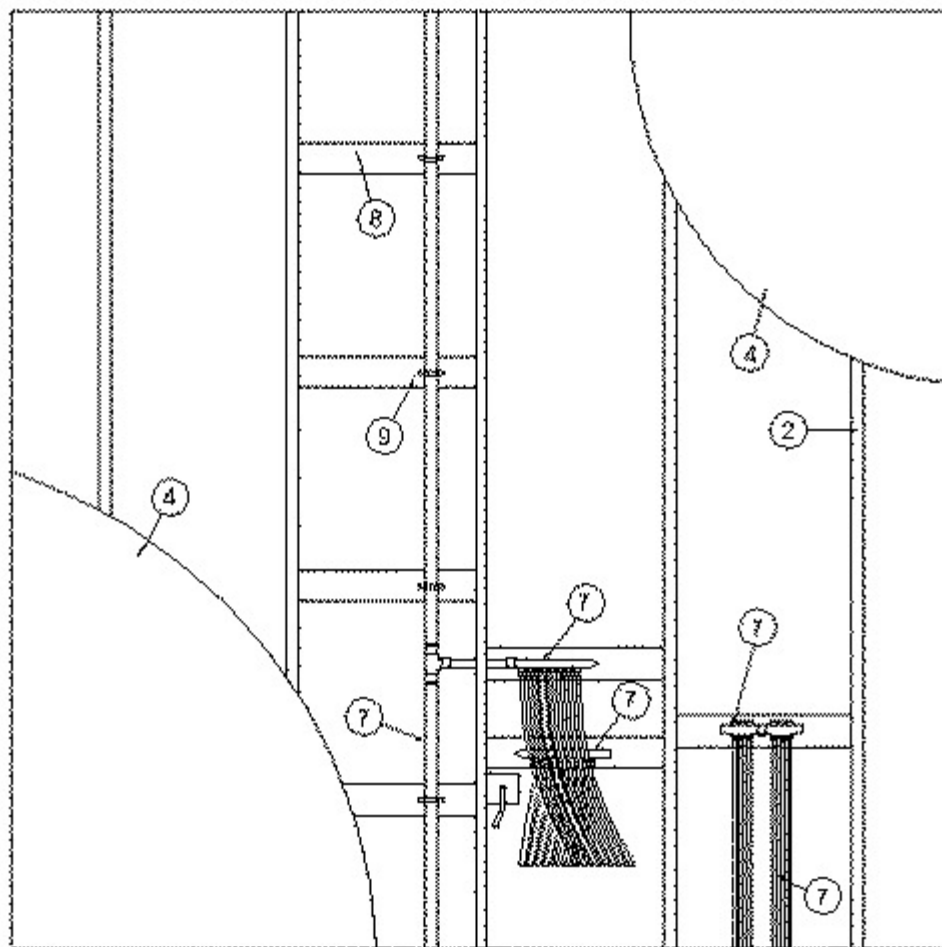
**Design/System/Construction/Assembly Usage Disclaimer**

- Authorities Having Jurisdiction should be consulted in all cases as to the particular requirements covering the installation and use of UL Certified products, equipment, system, devices, and materials.
- Authorities Having Jurisdiction should be consulted before construction.
- Fire resistance assemblies and products are developed by the design submitter and have been investigated by UL for compliance with applicable requirements. The published information cannot always address every construction nuance encountered in the field.
- When field issues arise, it is recommended the first contact for assistance be the technical service staff provided by the product manufacturer noted for the design. Users of fire resistance assemblies are advised to consult the general Guide Information for each product category and each group of assemblies. The Guide Information includes specifics concerning alternate materials and alternate methods of construction.
- Only products which bear UL's Mark are considered Certified.

**Fire-resistance Ratings - ANSI/UL 263**

[See General Information for Fire-resistance Ratings - ANSI/UL 263](#)

**Design No. V444**  
February 19, 2013  
**Nonbearing Wall Rating — 1 HR.**



1. **Floor and Ceiling Runners** — (Not Shown) - Channel shaped runners, 3-5/8 in. wide (min), 1-1/4 in. legs, formed from min No. 25 MSG (min No. 20 MSG when Item 4C is used) galv steel, attached to floor and ceiling with fasteners spaced 24 in. OC max.

1A. **Framing Members\* - Floor and Ceiling Runners** — Not shown - In lieu of Item 1 - For use with Item 2A, proprietary channel shaped runners, 1-1/4 in. deep by min 3-5/8 in. wide fabricated from min 0.020 in. thick galv steel, attached to floor and ceiling with fasteners spaced 24 in. OC max.

**CALIFORNIA EXPANDED METAL PRODUCTS CO** — Viper20™ Track

**MARINO/WARE, DIV OF WARE INDUSTRIES INC** — Viper20™ Track

**PHILLIPS MFG CO L L C** — Viper20™ Track

1B. **Framing Members\*— Floor and Ceiling Runners** — Not shown - In lieu of Item 1 - For use with Item 2B, channel shaped runners, 1-1/4 in. deep by min 3-5/8 in. wide fabricated from min 0.018 in. thick galv steel, attached to floor and ceiling with fasteners spaced 24 in. OC max.

**CLARKDIETRICH BUILDING SYSTEMS** — CD ProTRAK

**DMFCWBS L L C** — ProTRAK

**MBA BUILDING SUPPLIES** — ProTRAK

**RAM SALES L L C** — Ram ProTRAK

**SOUTHEASTERN STUD & COMPONENTS INC — ProTRAK**

**STEEL STRUCTURAL SYSTEMS L L C — Tri-S ProTRAK**

1C. **Framing Members\* - Floor and Ceiling Runners** — Not shown - In lieu of Item 1 - For use with Item 2C, proprietary channel shaped runners, 1-1/4 in. deep by min 3-5/8 in. wide fabricated from min 0.020 in. thick galv steel, attached to floor and ceiling with fasteners spaced 24 in. OC max.

**TELLING INDUSTRIES L L C — Viper20™ Track**

1D. **Framing Members\*— Floor and Ceiling Runners** — Not shown - In lieu of Item 1 - For use with Item 2D, channel shaped runners, 1-1/4 in. deep by min 3-5/8 in. wide fabricated from min 0.018 in. thick galv steel, attached to floor and ceiling with fasteners spaced 24 in. OC max.

**TELLING INDUSTRIES L L C — TRUE-TRACK™**

2. **Steel Studs** — Channel shaped, 3-5/8 in. wide (min), 1-1/4 in. legs, 3/8 in. folded back returns, formed from min No. 25 MSG (min No. 20 MSG when Item 4C is used) galv steel spaced max.24 in. OC. Studs cut 3/8 in. less in length than assembly height.

2A. **Framing Members\* - Steel Studs** — Not shown - In lieu of Item 2 - For use with Item 1A, proprietary channel shaped steel studs, 1-1/4 in. deep by min 3-5/8 in. wide fabricated from min 0.020 in. thick galv steel. Studs cut 3/8 in. less in length than assembly height. Spaced 24 in. OC max.

**CALIFORNIA EXPANDED METAL PRODUCTS CO — Viper20™**

**MARINO/WARE, DIV OF WARE INDUSTRIES INC — Viper20™**

**PHILLIPS MFG CO L L C — Viper20™**

2B. **Framing Members\*— Steel Studs** — Not shown - In lieu of Item 2 - For use with Item 1B, channel shaped steel studs, min 3-5/8 in. wide fabricated from min 0.018 in. thick galv steel. Studs cut 3/8 in. less in length than assembly height. Spaced 24 in. OC max.

**CLARKDIETRICH BUILDING SYSTEMS — CD ProSTUD**

**DMFCWBS L L C — ProSTUD**

**MBA BUILDING SUPPLIES — ProSTUD**

**RAM SALES L L C — Ram ProSTUD**

**SOUTHEASTERN STUD & COMPONENTS INC — ProSTUD**

**STEEL STRUCTURAL SYSTEMS L L C — Tri-S ProSTUD**

2C. **Framing Members\* - Steel Studs** — Not shown - In lieu of Item 2 - For use with Item 1C, proprietary channel shaped steel studs, 1-1/4 in. deep by min 3-5/8 in. wide fabricated from min 0.020 in. thick galv steel. Studs cut 3/8 in. less in length than assembly height. Spaced 24 in. OC max.

**TELLING INDUSTRIES L L C — Viper20™**

2D. **Framing Members\*— Steel Studs** — Not shown - In lieu of Item 2 - For use with Item 1D, channel shaped steel studs, min 3-5/8 in. wide fabricated from min 0.018 in. thick galv steel. Studs cut 3/8 in. less in length than assembly height. Spaced 24 in. OC max.

**TELLING INDUSTRIES L L C** — TRUE-STUD™

3. **Batts and Blankets\*** — (Optional, Not shown) - Mineral wool or glass fiber batts partially or completely filling stud cavity.

See **Batts and Blankets** (BZJZ) category for names of Classified companies.

4. **Gypsum Board\*** — 5/8 in. thick, 4 ft wide, attached to steel studs and floor and ceiling track with 1 in. long, Type S steel screws spaced 8 in. OC. along edges of board and 12 in. OC in the field of the board. Joints oriented vertically and staggered on opposite sides of the assembly. When attached to item 6 (resilient channels) or 6A (furring channels), gypsum board is screw attached to furring channels with 1 in. long, Type S steel screws spaced 12 in. OC.

**CGC INC** — Types AR, C, IP-AR, IP-X1, IP-X2, IPC-AR, SCX, SHX, WRC or WRX.

**UNITED STATES GYPSUM CO** — Type AR, C, FRX-G, IP-AR, IP-X1, IP-X2, IPC-AR, SCX, SHX, WRC, WRX, USGX (Joint tape and compound, Item 5, optional for use with Type USGX).

**USG MEXICO S A DE C V** — Type AR, C, IP-AR, IP-X1, IP-X2, IPC-AR, SCX, SHX, WRC or WRX.

4A. **Gypsum Board\*** — (As an alternate to Items 4 or 4A) - Nom 3/4 in. thick, 4 ft wide, installed as described in Item 4A with screw length increased to 1-1/4 in.

**CGC INC** — Types AR, IP-AR.

**UNITED STATES GYPSUM CO** — Types AR, IP-AR.

**USG MEXICO S A DE C V** — Types AR, IP-AR.

4B. **Gypsum Board\*** — (As an alternate to Item 4, not for use with Items 1B and 2B) - Nom. 5/8 in. thick, 4 ft. wide gypsum panels with beveled, square or tapered edges installed as described in Item 4.

**CGC INC** — Type ULX

**UNITED STATES GYPSUM CO** — Type ULX

**USG MEXICO S A DE C V** — Type ULX

5. **Joint Tape and Compound** — (Not Shown)- Vinyl, dry or premixed joint compound, applied in two coats to joints and screw heads; paper tape, 2 in. wide, embedded in first layer of compound over all joints. As an alternate, nominal 3/32 in. thick gypsum veneer plaster may be applied to the entire surface of Classified veneer baseboard. Joints reinforced.

6. **Resilient Channel** — (Optional-Not Shown) - 25 MSG galv steel resilient channels spaced vertically max 24 in. OC, flange portion attached to each intersecting stud with 1/2 in. long type S-12 pan head steel screws. Not for use with Type FRX gypsum panels.

7. **Non-Metallic Plumbing System Components\*** — Nom 1/2 in., 5/8 in., 3/4 in., 1 in., 1-1/4 in., 1-1/2 in. and 2 in. diameter tubing attached to cross bracing (Item 8) with steel or copper fasteners (Item 9). The tubing may be connected to standard copper or brass plumbing components, tees, bend supports and manifolds within the cavity. Plastic manifolds and fittings with a weight not exceeding 1.0 lb. per cavity, may be used in lieu of or in addition to copper or brass manifolds. The maximum amount of tubing per stud cavity shall be 1.3 lbs./ft and shall not exceed a total weight per stud cavity of 8.0 lbs.

**UPONOR WIRSBO COMPANY** — Types AquaPex White, AquaPex Red, AquaPex Blue, and HePex

7A. **Non-Metallic Plumbing System Components\*** — (Not Shown) — As an alternate to Item 7, Nominal 1/2 in., 3/4 in. and 1 in. diameter tubing with 1/2 in. insulation attached to cross bracing (Item 8) with steel or copper fasteners (Item 9). The pre-insulated tubing may be connected to standard copper or brass plumbing components, tees, bend supports and manifolds within the cavity. Plastic manifolds and fittings with a weight not exceeding 1.0 lb. per cavity, may be used in lieu of or in addition to copper or brass manifolds. The maximum amount of pre-insulated tubing per stud cavity shall be 1.3 lbs./ft and shall not exceed a total weight per stud cavity of 8.0 lbs.

**UPONOR WIRSBO COMPANY** — Type Pre-Insulated AquaPex

8. **Cross Bracing** — Standard No. 25 MSG, 3-5/8 in. wide (min), 1-1/4 in. legs, 3/8 in. folded back returns, or 2 by 4 in. dimensional lumber cut to fit within the stud cavity. The maximum spacing between cross bracing in cavities that contain tubing shall be 29 in. OC. The bracing shall be screw attached to the studs using standard 1 in. long Type S screws.

9. **Fasteners** — Standard copper, brass or steel plumbing fasteners. The fasteners shall be screw attached to the bracing using a minimum 7/8 in long screw.

\*Bearing the UL Classification Mark

[Last Updated](#) on 2013-02-19

[Questions?](#)

[Print this page](#)

[Terms of Use](#)

[Page Top](#)

© 2013 UL LLC

When the UL Leaf Mark is on the product, or when the word "Environment" is included in the UL Mark, please search the [UL Environment database](#) for additional information regarding this product's certification.

The appearance of a company's name or product in this database does not in itself assure that products so identified have been manufactured under UL's Follow-Up Service. Only those products bearing the UL Mark should be considered to be Certified and covered under UL's Follow-Up Service. Always look for the Mark on the product.

UL permits the reproduction of the material contained in the Online Certification Directory subject to the following conditions: 1. The Guide Information, Assemblies, Constructions, Designs, Systems, and/or Certifications (files) must be presented in their entirety and in a non-misleading manner, without any manipulation of the data (or drawings). 2. The statement "Reprinted from the Online Certifications Directory with permission from UL" must appear adjacent to the extracted material. In addition, the reprinted material must include a copyright notice in the following format: "© 2013 UL LLC".